

**WL3252**

**3W Constant Current Step Light-Wide output Frosted Diffuser**

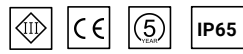


**Description**

Slide step light;  
Stylish design;  
Recessed intallation;  
CCT switch ;  
IP65;

**Finish**  
Black/White

**Material**  
Aluminium



**TECHNICAL CHARACTERISTICS**

**Light source**

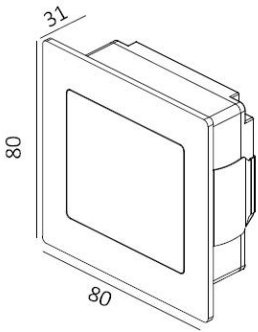
Light source:Osram 2835 Chip  
Output (W): 2.1W ( 700mA 3V )  
Total power consumption (W): 3W  
Color temperature: 2700K/3000K  
CRI: 90  
Photobiological risk: RG1  
Real Lumen: 86lm  
Lm/Real W: 40lm  
Life Time: 50.000h L80B10  
MacAdam steps: 3  
UGR: 19

**Gear**

This product is supplied without gear.  
CCT Switch.  
With recessed box.

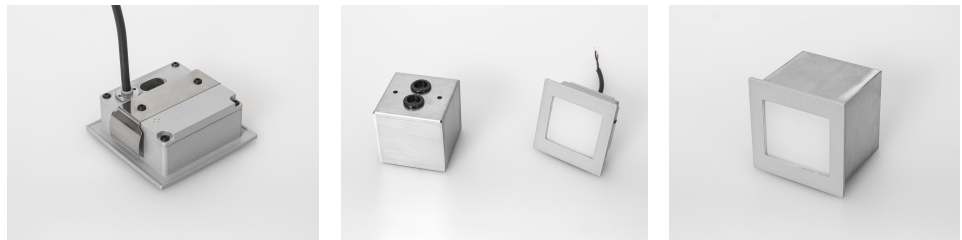
**Luminaire**

Crossing: No  
Warranty: 5 Years

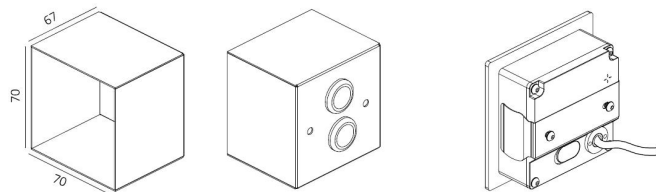


68\*68mm  
5-25mm

**More details**



**Sketch**



71\*71mm

The photograph may not match the reference exactly. Please read the product description to identify the finish.